



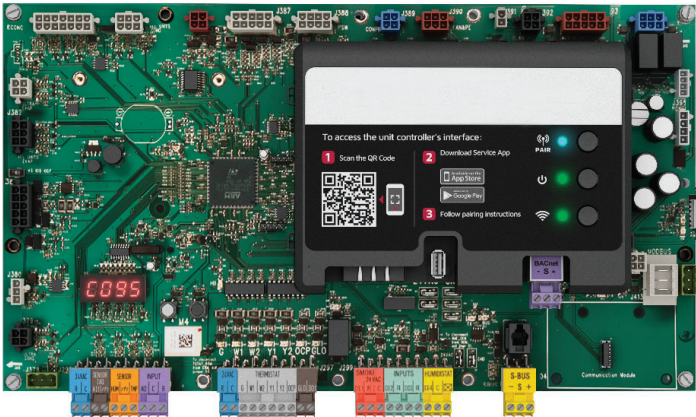
©2024 Lennox Industries Inc.
Dallas, Texas, USA

CONTROLS KITS AND ACCESSORIES

508666-01
12/2024

Unit Controller Replacement Kit

INSTALLATION INSTRUCTIONS FOR UNIT CONTROLLER REPLACEMENT KIT (28B97)



Shipping and Packing List

Package 1 of 1 contains:

- Unit Controller
- Unit Controller Replacement Kit Instruction

Overview

This kit (28B97) is a direct replacement for all factory installed M4/W4 unit controller.

Saving System Profile (Unit Controller being Replaced)

⚠ CAUTION

Electrostatic discharge can affect electronic components. Take precautions during unit installation and service to protect the unit's electronic controls. Precautions will help to avoid control exposure to electrostatic discharge by putting the unit, the control and the technician at the same electrostatic potential. Neutralize electrostatic charge by touching hand and all tools on an unpainted unit surface before performing any service procedure.

⚠ IMPORTANT

Improper installation, adjustment, alteration, service or maintenance can cause personal injury, loss of life, or damage to property.

Installation and service must be performed by a licensed professional installer (or equivalent) or a service agency.

⚠ WARNING

ELECTRICAL SHOCK HAZARD



Can cause injury or death. Unit must be grounded in accordance with national and local codes.

Line voltage is present at all components when unit is not in operation on units with single-pole contactors. Disconnect all remote electrical power supplies before opening access panel. Unit may have multiple power supplies.

COLLECT SYSTEM INFORMATION

If the old unit controller is operational, pair the Service App to the roof top unit. Navigate to the RTU Menu, and then navigate to **DATA > FACTORY**.

Data such as **MODEL NUMBER**, **CONFIGURATION ID 1 and 2**, **CATALOG NUMBER**, **SERIAL NUMBER** and **RTU DESCRIPTION** should all be written down in order to configure the new unit controller correctly. Once the above configuration settings has been collected, use the following procedure to save the unit controller (system) profile.

If there is a current saved Profile, then proceed to Loading Profile section. If not available, use the following procedure to save a Profile. A profile can be saved on a USB drive, or on a mobile device.

SAVING A PROFILE TO USB

1. Insert a compatible USB storage device
2. On the Service App, go to **RTU MENU > SERVICE > REPORT**, and select **SYSTEM PROFILE**.
3. Type a unique name for the profile in the **PROFILE NAME** field
4. Choose **SAVE** under **MOBILE** or **USB** depending on the device you would like to use.
5. If **MOBILE** is selected, your device will prompt you to choose a location to save too.

NOTE: If the Service App indicates the unit controller was unable to read the USB storage device, remove and reinsert USB storage device and attempt to save the profile again.

Loading System Profile (New Unit Controller)

INPUTING SYSTEM INFORMATION AND RUNNING NETWORK WIZARD

The System profile saves specific data only. Data saved includes configuration information such as Test & Balance settings and any parameters that were manually configured through **SETTINGS > RTU OPTIONS > EDIT PARAMETER** screen.

If a current System Profile is available, use the following procedure to load the existing profile to the new unit controller.

NOTE: If no System Profile is available, information concerning the unit configuration and accessories installed is available from the following sources:

- Unit Nameplate (catalog, model and serial numbers)
- Original Factory Unit Configuration label located in control box area
- Unit parameter labels located on unit or in the unit installation instruction should have recorded data concerning any parameters that were manually changed from defaults.

1. Run **SETUP > INSTALL** wizard.
2. Select **DATE/TIME** and press the **NEXT** button.
3. Enter the roof top unit (RTU) name from data collected from the Saving Profile procedure, or alternatively, give the RTU a name which describes it's location or bus address.
4. Enter the **MODEL, CATALOG and SERIAL NUMBER** from the unit nameplate or data collected from the Saving System profile procedure. Press **NEXT** to continue.
5. Enter the **CONFIGURATION ID 1 and 2** information that was collected prior to removal of the existing M4/W4 unit controller. If no information was collected, use the information located on a label to the right of the new M4/W4 unit controller in the control box area. Press the **NEXT** button to continue after both IDs have been configured.

NOTE: If the Original Factory Unit Configuration labels are missing from the unit, refer to the Unit Controller Setup Guide included with this kit for model number and Configuration ID 1 and 2 setting information. A detailed listing of the configuration ID settings is also available in the app by selecting the ⓘ button on this step of the wizard.

NOTE: Depending on accessories configured, additional settings will be prompted to be completed.

6. Update any parameters to match the factory or latest field settings as found on label(s) in unit control section.
7. Go to **SETUP > NETWORK INTEGRATION > NETWORK SETUP WIZARD** and complete the network wizard.

LOADING SYSTEM PROFILE

1. Insert the USB storage device that contains the current saved System profile, or continue if you have a system profile saved on your mobile device.
2. Go to **SERVICE > REPORT**. Choose **LOAD** under mobile or USB, depending on where your system profile is saved.

NOTE: The Service App may indicate either the unit controller was unable to read the USB storage device or it is missing. Remove and reinsert USB storage device and attempt to load the System Profile again. If the issue continues, all data will have to be entered manually.

3. Select the desired System Profile by using the Service App. If loading a system profile from USB, select **NEXT** to continue. If the process was completed successfully, the app will indicate "System Profile Loaded"

Running Setup > Test and Balance

1. If a System Profile was loaded, Test & Balance settings have already been configured and this procedure is not required.
2. If no System Profile was available, then go to **RTU MENU > SETUP > TEST & BALANCE** and complete all applicable menu options under that section.

NOTE: Refer to the Original Factory Unit Configuration label located in control box area and additional data located on the unit access panel which provide more information concerning factory and field settings.

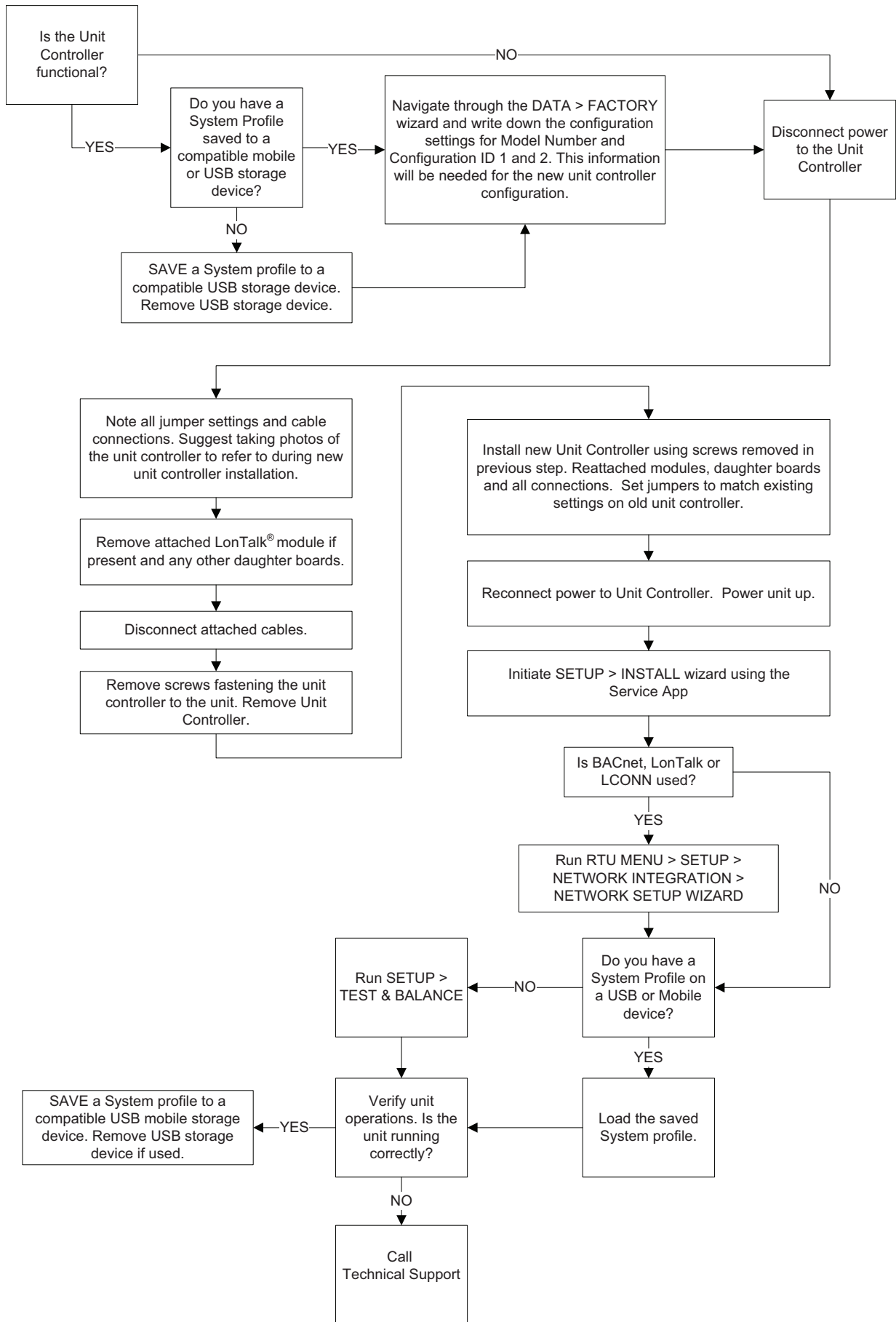


Figure 1. Unit Controller Replacement