

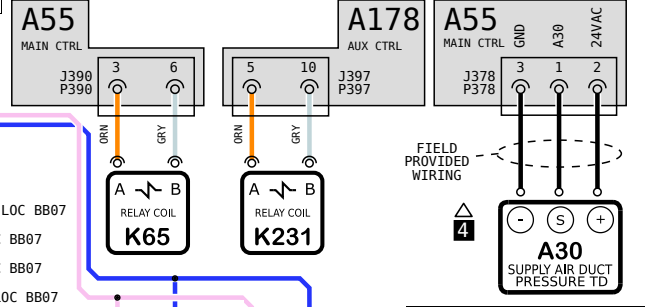
KEY LIST	
LOCATION	COMPONENT DESCRIPTION
S506	A30 TRANSUDGER, SA DUCT PRESSURE
CC05/08	A96 CONTROL INVERTER, BLOWER
MM05,EE10	A192 INVERTER, COMPRESSOR 1
B809	AM1, AM2 AIR MONITOR, SUPPLY/RETURN, IAQ-TVOC
FF/GG/JJ/KK10	B1, B2, B13, B20 COMPRESSOR 1, 2, 3, 4
CC10	B3 MOTOR, BLOWER
PP02/08/09	B4, B5, B21, B22, B23, B24 MOTOR, OUTDOOR FAN 1, 2, 3, 4, 5, 6
QQ09	B10, B11 MOTOR, EXHAUST FAN 1, 2
LL10	B47 MOTOR, COOLING FAN FOR A192
QQ09	C6, C8 CAPACITOR, EXHAUST FAN 1, 2
LL05	F6 FUSE, EXHAUST FAN
LL07	F10 FUSE, COMPONENT
EE09	FL1 FILTER BOARD
FF/GG/JJ/KK10	HR1, HR2, HR5, HR11 HEATER, COMPRESSOR 1, 2, 3, 4
FF/GG05,08,08	K1, K2, K14, K146 CONTACTOR, COMPRESSOR 1, 2, 3, 4
QQ07	K65, K231 RELAY, EXHAUST FAN 1, 2
EE05/08, MM10	K191 RELAY, CRANKCASE HEATER 1
EE06	K203 RELAY, INVERTER CONTROL
AA02	L14, L30 VALVE, SOLENOID, REHEAT COIL 1, 2
DD09	L43 REACTOR INVERTER
GG01	RT6 SENSOR, A55 DISCHARGE (IMC)
DD01	RT17 SENSOR, OUTSIDE AIR TEMP
GG03, MM02/03	RT42, RT43, RT54, RT55 SENSOR, SUCTION TEMP., COMP 1, 2, 3, 4
DD03, JJ02/03	RT44, RT45, RT56, RT57 SENSOR, LIQUID TEMP., COMP 1, 2, 3, 4
GG02, MM01/02	RT46, RT47, RT50, RT51 SENSOR, SAT. SUCT TEMP., COMP 1, 2, 3, 4
DD01/02, JJ01/02	RT48, RT49, RT52, RT53 SENSOR, SAT. LIQUID TEMP., COMP 1, 2, 3, 4
BB01/02, GG02/01	S4, S7, S28, S96 LIMIT, HI PRESS. SWITCH, COMP 1, 2, 3, 4
AA01	S5 LIMIT, HI TEMP. SWITCH, COMP 1
BB02/03, GG03/02	S87, S88, S98, S97 SWITCH, LOW PRESS., COMP. 1, 2, 3, 4
AA08	T1 TRANSFORMER, CONTROL
BB06	T18 TRANSFORMER, CONTACTOR
FF09	T61 TRANSFORMER, INV INTERNAL POWER
AA07	TB13 TERMINAL STRIP, POWER DISTRIBUTION

**NOTES**

- 1 ONLY ON UNITS WITH HUMIDITROL OPTION
- 2 FOR REMOTE LOCATION OF RT6, ADD THE EXTENSION HARNESS
- 3 MOVE WIRES FROM 240 TO 208 TAP ON TRANSFORMER FOR 208 VOLT APPLICATIONS
- 4 USED ON VAV UNITS ONLY

← DENOTES OPTIONAL COMPONENTS AND WIRING

- 01
- 02
- 03
- 04
- 05
- 06
- 07
- 08
- 09
- 10



**WARNING**

DISCONNECT ALL POWER BEFORE SERVICING. ELECTRIC SHOCK HAZARD, CAN CAUSE INJURY OR DEATH. UNIT MUST BE GROUNDED IN ACCORDANCE WITH NATIONAL AND LOCAL CODES.

FOR USE WITH COPPER CONDUCTORS ONLY. REFER TO UNIT RATING PLATE FOR MINIMUM CIRCUIT AMPACITY AND MAXIMUM OVERCURRENT PROTECTION SIZE.

IF ANY WIRE IN THIS APPLIANCE IS REPLACED, IT MUST BE REPLACED WITH WIRE OF LIKE SIZE, RATING AND INSULATION THICKNESS.

Model: LCM, LGM 210U, 240U, 300U, A2L - Y-VOLT Voltage: 208-240V/3~/60Hz (Y)  
 COOLING - MSAV NO BYPASS -OR- VAV - 4 COMPRESSORS, 6 CONDENSER FANS Supersedes: N/A Form No: 538446-01 Rev: 0

© 2019

HEATING SECTION A	COOLING SECTION B	COOLING SECTION B3	ACCS SECTION C	ACCS SECTION D
WIRING DIAGRAM FLOW				

REV	EC NO.	DATE	BY	APVD	REVISION NOTE
---	CN-012015	04-30-2024	DEV	JAL21	ORIGINATED AT PD&R CARROLLTON, TX

10x17 CUT SIZE