

538430-02  
01

02

03

04

05

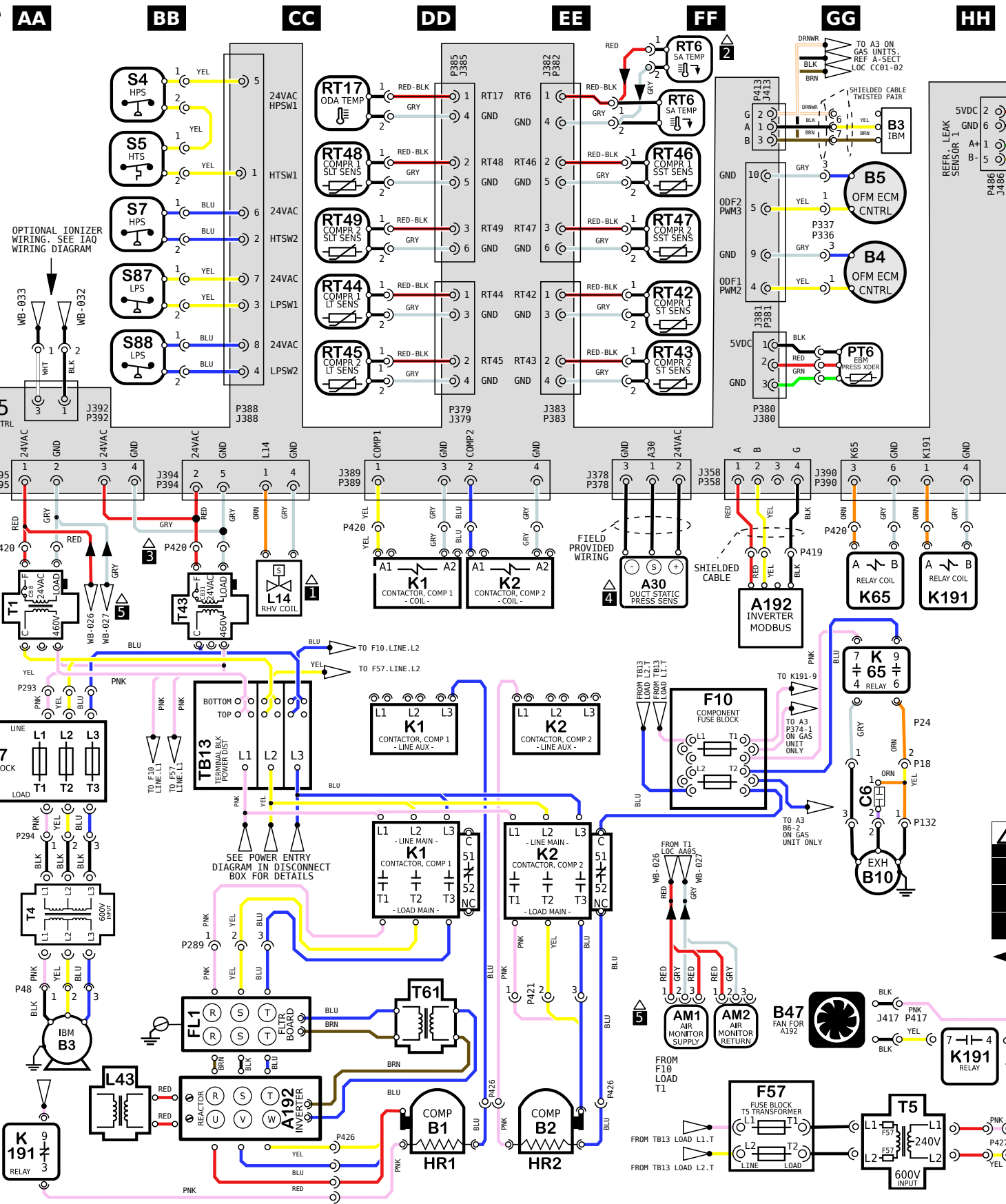
06

07

08

09

10



**KEY LIST**

LOCATION	COMPONENT DESCRIPTION
EE/FF05	A30 SENSOR, DUCT STATIC PRESSURE
FF/GG05, BB/CC09	A192 INVERTER, COMPRESSOR 1
DD/EE09/10	B1, B2 COMPRESSOR 1, 2
AA09, GG01	B3 MOTOR, BLOWER
GG02, KK09	B4, B5 MOTOR, OUTDOOR FAN 1, 2
GG07	B10 MOTOR, EXHAUST FAN 1
GG08/09	B47 MOTOR, COOLING FAN FOR A192
GG07	C6 CAPACITOR, EXHAUST FAN 1
FF06	F10 FUSE, COMPONENT
GG09	F57 FUSE, T5 TRANSFORMER
AA06/07	F27 FUSE, T4 TRANSFORMER
BB/CC08/09	FL1 FILTER BOARD
DD/EE10	HR1, HR2 HEATER, COMPRESSOR 1, 2
DD/EE05, 06, 07, 08	K1, K2 CONTACTOR, COMPRESSOR 1, 2
GG05/06	K65 RELAY, EXHAUST FAN 1
AA09/10, HH05/08	K191 RELAY, CRANKCASE HEATER 1
CC05	L14 VALVE, SOLENOID, REHEAT COIL 1, 2
BB09	L43 REACTOR INVERTER
GG03	PT6 PRESSURE TRANSDUCER, EBM MOTOR
FF01	RT6 SENSOR, A55 DISCHARGE (IMC)
CC01	RT17 SENSOR, OUTSIDE AIR TEMP
FF03	RT42, RT43 SENSOR, SUCTION TEMP., COMP 1, 2
CC03	RT44, RT45 SENSOR, LIQUID TEMP., COMP 1, 2
FF02	RT46, RT47 SENSOR, SAT. SUCT TEMP., COMP 1, 2
CC02	RT48, RT49 SENSOR, SAT. LIQUID TEMP., COMP 1, 2
JJ01	RT58 SENSOR 1, REFRIGERANT LEAK DETECTION
BB01/02	S4, S7 LIMIT, HI PRESS. SWITCH, COMP 1, 2
BB01	S5 LIMIT, HI TEMP. SWITCH, COMP 1
BB02/03	S87, S88 SWITCH, LOW PRESS., COMP. 1, 2
AA05	T1 TRANSFORMER, CONTROL
AA07/08	T4 TRANSFORMER, BLOWER MOTOR
GG/HH10	T5 TRANSFORMER, OUTDOOR FAN MOTOR
BB05	T43 TRANSFORMER, CONTACTOR
DD08/09	T61 TRANSFORMER, INV INTERNAL POWER
BB/CC 06/07	TB13 TERMINAL STRIP, POWER DISTRIBUTION

- NOTES**
- ONLY ON UNITS WITH HUMIDITROL OPTION
  - FOR REMOTE LOCATION OF RT6, ADD THE EXTENSION HARNESS
  - MOVE WIRES FROM 240 TO 208 TAP ON TRANSFORMER FOR 208 VOLT APPLICATIONS
  - USED ON VAV UNITS ONLY
  - IAQ SENSORS OPTIONAL
- ▲ DENOTES OPTIONAL COMPONENTS AND WIRING

**WARNING**

DISCONNECT ALL POWER BEFORE SERVICING.

ELECTRIC SHOCK HAZARD, CAN CAUSE INJURY OR DEATH. UNIT MUST BE GROUNDED IN ACCORDANCE WITH NATIONAL AND LOCAL CODES.

FOR USE WITH COPPER CONDUCTORS ONLY. REFER TO UNIT RATING PLATE FOR MINIMUM CIRCUIT AMPACITY AND MAXIMUM OVERCURRENT PROTECTION SIZE.

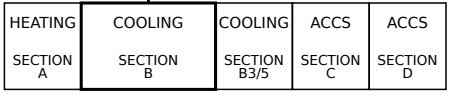
IF ANY WIRE IN THIS APPLIANCE IS REPLACED, IT MUST BE REPLACED WITH WIRE OF LIKE SIZE, RATING AND INSULATION THICKNESS.

Product: LGM ALL UNIT J VOLT CONV KIT  
Cooling Diagram with Higher SCCR

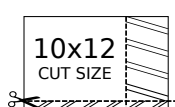
Voltage: 575/3/60 (J)  
Supersedes: N/A

Form No: 538430-02 Rev: 1

WIRING DIAGRAM FLOW



© 2019



REV	EC NO.	DATE	BY	APVD	REVISION NOTE
---	CN-012081R	07-16-2024	FEP	MCF	ORIGINATED AT PD&R CARROLLTON, TX
001	CN-012081W	09-19-2024	FEP	FXV	UPDATED P18 CONNECTORS FROM 3 & 4 TO 1 & 2



538430-02

01

02

03

04

05

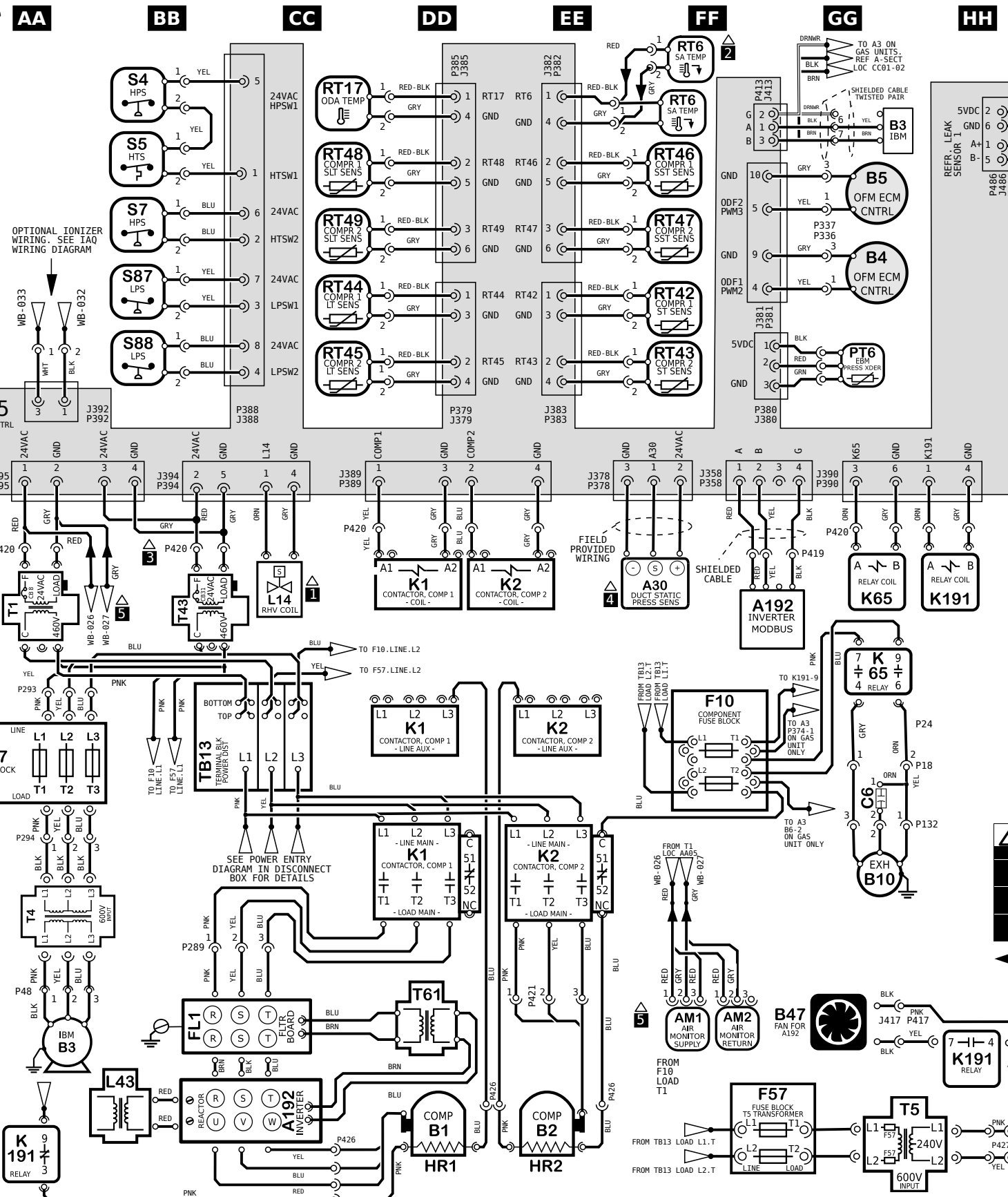
06

07

08

09

10



Product: LGM ALL UNIT J VOLT CONV KIT  
Cooling Diagram with Higher SCCR

Voltage: 575/3/60 (J)  
Supersedes: N/A

Form No: 538430-02 Rev: 1

WIRING DIAGRAM FLOW

HEATING SECTION A	COOLING SECTION B	COOLING SECTION B3/5	ACCS SECTION C	ACCS SECTION D
-------------------	-------------------	----------------------	----------------	----------------

© 2019



REV	EC NO.	DATE	BY	APVD	REVISION NOTE
---	CN-012081R	07-16-2024	FEP	MCF	ORIGINATED AT PD&R CARROLLTON, TX
001	CN-012081W	09-19-2024	FEP	FXY	UPDATED P18 CONNECTORS FROM 3 & 4 TO 1 & 2